



ATM Vestibule Reader

(BIN Restricted)

OPERATOR GUIDE

December 2012



Cutting edge simplicity

Table of Contents

INTRODUCTION	3
• Programming Kit.....	3
NOTICE	4
INSTALLATION	4
CONFIGURATION	5
• Startup Menu	5
• Setup Menu.....	7
• BIN Code Entry.....	8
• Program BIN Codes.....	10
• Clear BIN Codes.....	10
READER INITIALIZATION.....	11

© Copyright Cansec Systems, Ltd. 2012.
All rights reserved.

Introduction

Congratulations on your decision to use Cansec's ATM Vestibule BinIn system for secure and reliable ATM vestibule access control. The BIN-restricted magnetic stripe card readers offer the ability to limit access based on a Bank Information Number (BIN), providing added safety and security for ATM users. It is suitable for restricting access to cards issued by specific banking institutions for a maximum of 100 BIN numbers.

PROGRAMMING KIT

The easy-to-use BinIn software can be used to program readers to only accept cards with specified BINs. Readers are programmed using the BinIn programming kit.

The BinIn programming kit includes:

- Programming card
- USB adapter & driver
- 4 wire special cable (4 pin to 6 pin)
- BinIn software
- Operator guide



Supported Windows Operating Systems:

- 32-Bit Windows Operating Systems
 - Windows XP, Vista, 7 and Windows 8
- 64-Bit Windows Operating Systems
 - Windows XP, Vista, 7 and Windows 8

Notice

In this document, the term **BIN** or **Bank Identification Number** is used synonymously with **IIN** or **Issuer Identification Number**. The term **Issuer Identification Number (IIN)** has replaced the previously used **Bank Identification Number (BIN)**. See ISO/IEC 7812 for more information.

Installation

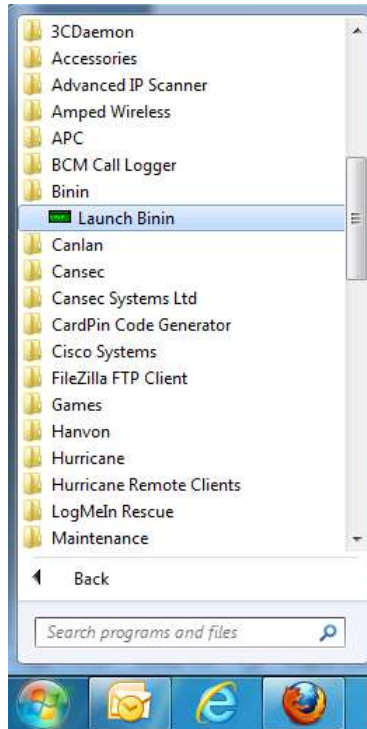
1. Insert the BinIn software CD into your computer's CD drive.
2. If your Windows Operating System is 32-bit, select “Install USB Adapter Driver for 32-bit Windows OS”.
3. If your Windows Operating System is 64-bit, select “Install USB Adapter Driver for 64-bit Windows OS”.
4. After the USB driver has been installed, select “Install BinIn Software”.
5. Follow the instructions in the installation wizard to finish the BinIn software installation.



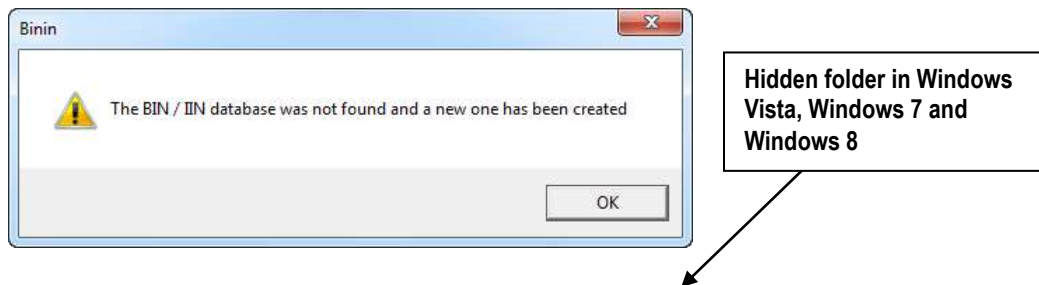
Configuration

STARTUP MENU

1. Launch the BinIn software from Windows' Start Menu.



2. The following prompt appears only if database has not been created. Click OK to accept.



Note: Database is created and stored in *C:\ProgramData\Cansec\Binin*.

3. Click OK to acknowledge the following BinIn Startup prompt:



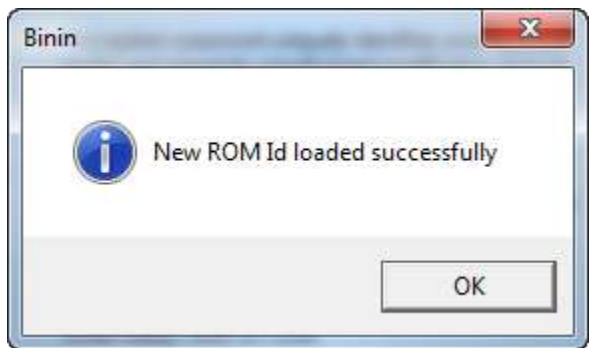
4. Create and enter a new system password. This password prevents unauthorized modification of your system configurations.



Password will be programmed into the reader. If the password is changed due to software re-installation or reader replacement then reader initialization is required. See reader initialization section for more information

If the USB Adapter is replaced with a new adapter, the serial of the new adapter is required to be loaded

5. Insert **just** the USB adapter and click **Load** to read the serial number of the adapter. The programming card should not be attached.



6. Click OK when done.

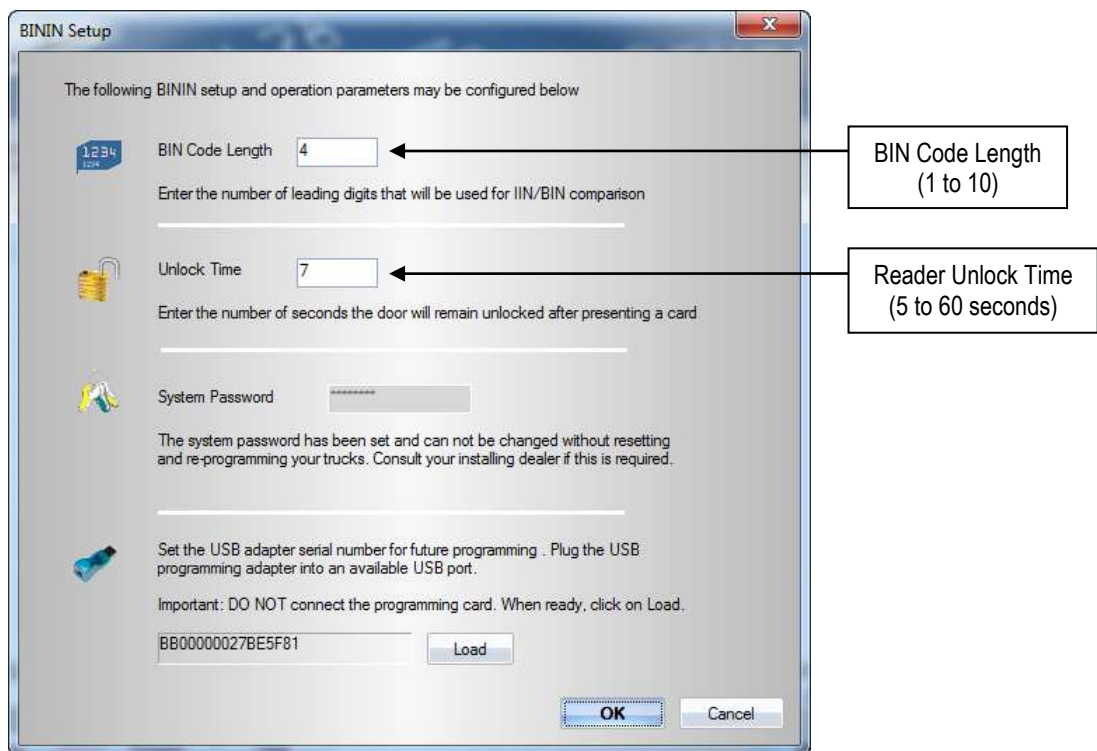
SETUP MENU

1. Click the **Setup** button.



2. Enter the desired BIN code length. This indicates the maximum number of leading digits that can be entered when adding a new BIN code in the database. See *BIN Code Entry* section.

Note: *BIN code length may be changed but will affect any rows that have been previously entered. Modification to affected rows is required before programming.*



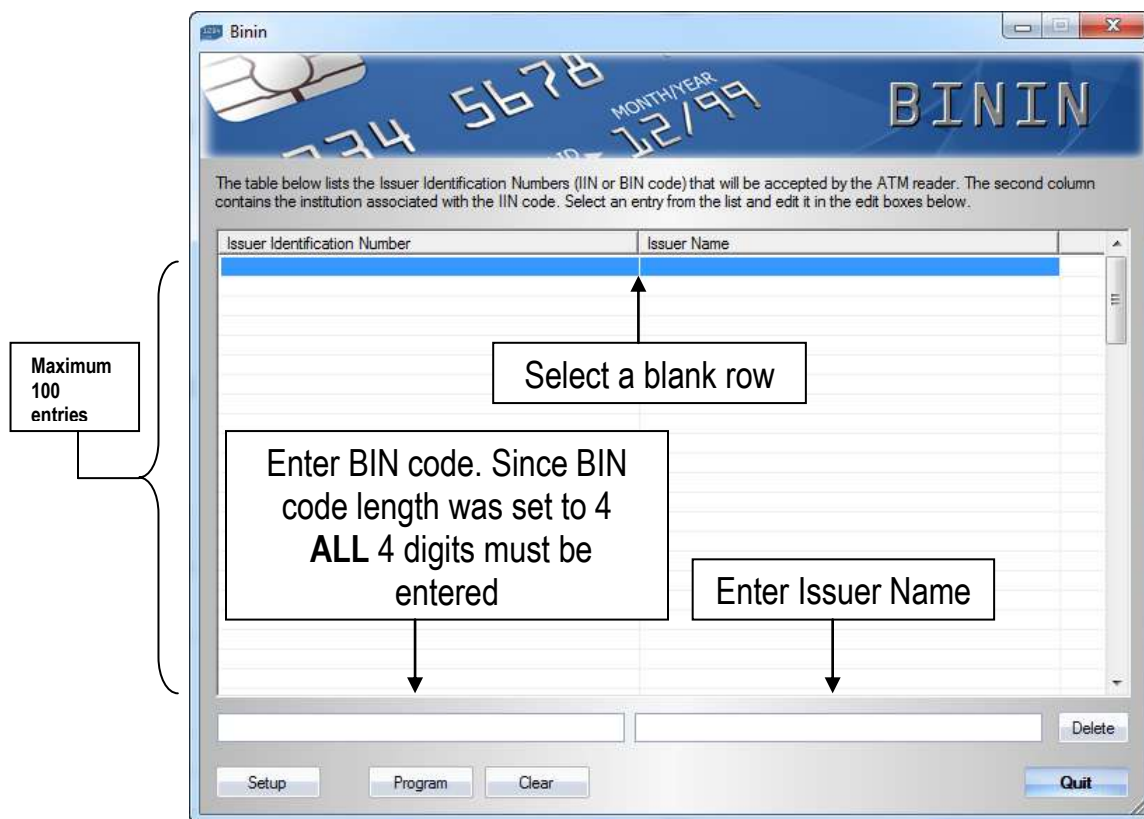
3. Enter the number of seconds that the lock is allowed to remain unlocked for after a valid card is presented (5 to 60 seconds).
4. Click **OK** when done.

BIN CODE ENTRY

Add restricted BIN number:

1. Select a blank row. Enter the BIN code or Issuer Identification Number. Press **Enter** to move to the next field and enter the Issuer Name.

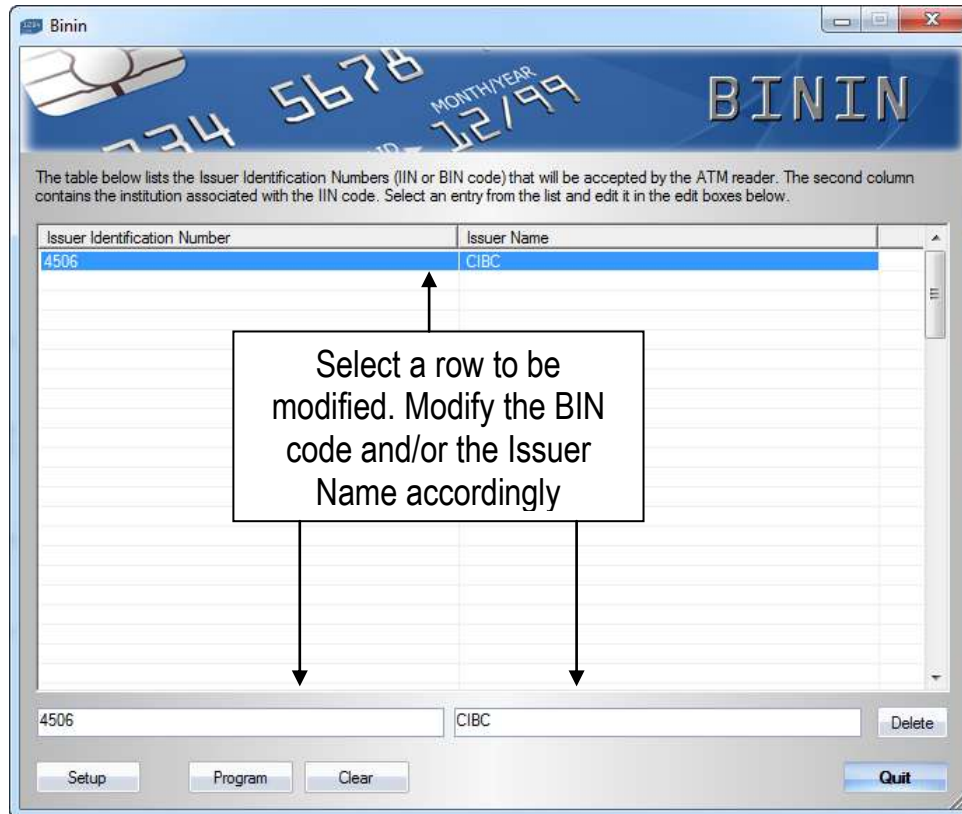
Note: Only cards with BINs that begin with the digits entered will be granted access. E.g. BIN code 4506 will allow access to any card number starting with 4506. In this example, BIN code length was set to 4-digits long.



2. Press **Enter** again to move to the next row or click on the next row to finish with data entry for that row.
3. If necessary, select the next blank row to enter more BIN codes.

Edit restricted BIN number:

1. Select an existing row to be modified.
2. Modify the BIN code or the Issuer Name accordingly.



3. Press **Enter** to move to the next row or click on the next row to finish with data modification for that row.

Delete restricted BIN number:

1. Select a row to be deleted.

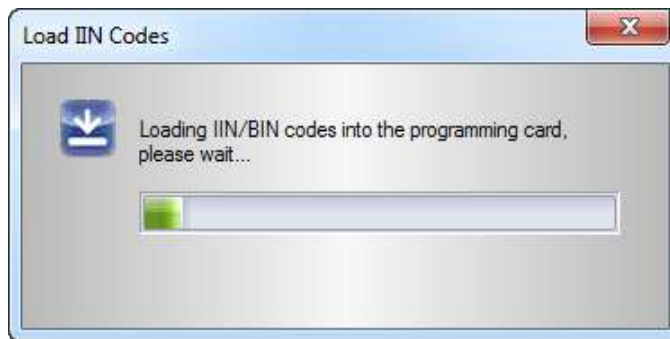
Issuer Identification Number	Issuer Name
4506	CIBC

2. Click **Delete** to delete that row



PROGRAM BIN CODES

1. If not already inserted, insert the USB adapter into a USB port on the computer.
2. Insert one end of the RJ-11 cord into the USB adapter and the other end into the programming card.
3. Click **Program** to program the card.

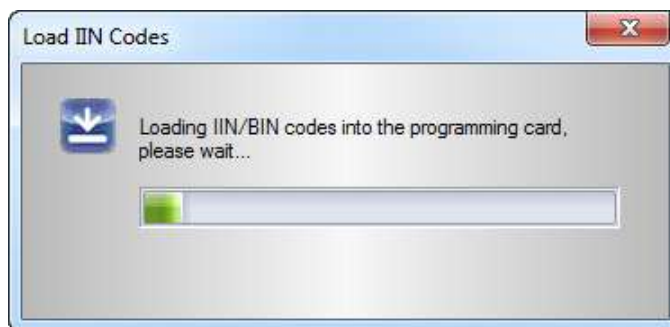


If a double beep is heard instead of a rapid chirp, it indicates that the password does not match. Proceed to reader initialization section

4. Remove the programming card from the cord.
5. Insert the programming card into an ATM reader.
6. The reader chirps rapidly during programming and stops when it's done.

CLEAR BIN CODES

1. If not already inserted, insert the USB adapter into a USB port on the computer.
2. Insert one end of the RJ-11 cord into the USB adapter and the other end into the programming card.
3. Click **Clear** to clear all the BIN codes from the card.



4. Remove the programming card from the cord.
5. Insert the programming card into an ATM reader.
6. The reader chirps rapidly during programming and stops when it's done.
7. This removes all BIN restrictions and allow access to all ABA track 2 cards.

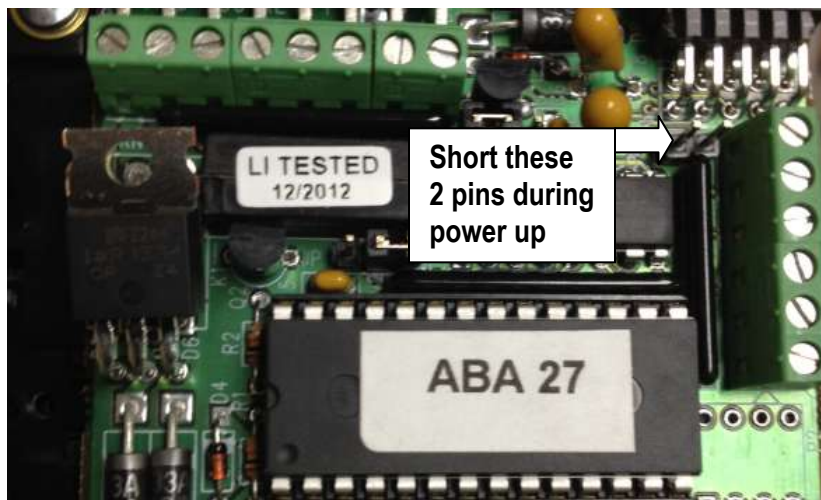
If a double beep is heard instead of a rapid chirp, it indicates that the password does not match. Proceed to reader initialization section

Reader Initialization

The ATM reader flashes GREEN and RED when in factory default mode. However, it does not need to be initialized once it has already been programmed, unless absolutely required to do so since initializing the reader will clear all the data, and return the reader to factory default mode. **Re-programming the reader is required.**

Reader initialization is also required when the system password does not match with the one previously programmed in the reader before any programming can be done.

1. Power down and open up the reader.
2. During power up, short or jump the two pins indicated in the images below.



3. The reader will beep and the LEDs start flashing RED and GREEN.
4. Re-program the reader.