

Electromagnetic Lock

CA-TA5111 & CA-TA5121 SERIES



The CA-TA5111 Series maglock provides exceptional security and ease of installation. With its simple to install quick mounting bracket and convenient wiring access panel, the CA-TA5111 will provide years of protection for the most demanding openings.

This maglock provides a holding force of 1200lbs/544kg, includes a built-in voltage spike suppression, lock status LED, timer and door status switch.

Electromagnetic Lock

CA-TA5111 & CA-TA5121 SERIES

OPTIONAL MOUNTING BRACKET

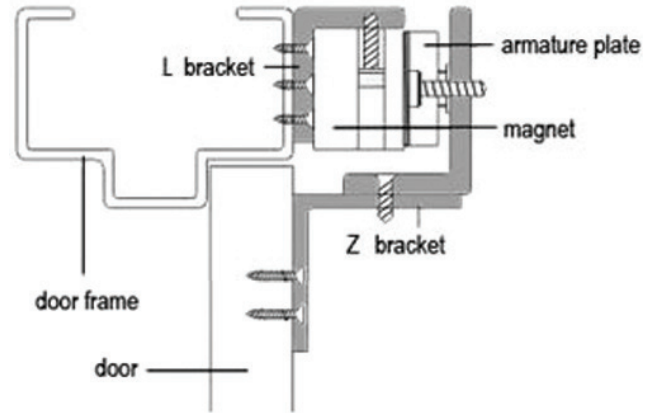
Optional L & Z Bracket for various mounting applications (Part #: CA-TA-B1002)



L Bracket



Z Bracket

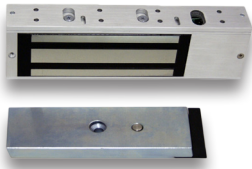


Installation Diagram

SPECIFICATIONS

Dimensions:	
Single Magnet	266mm(L) x 73mm(H) x 40mm(D)
Double Magnet	532mm(L) x 73mm(H) x 40mm(D)
Armature	185mm(L) x 61mm(W) x 16mm(T)
Voltage	12VDC or 24VDC Selectable
Current Draw	500mA @ 12VDC
(Each Door)	250mA @ 24VDC
Spike Suppression	Built-in
Holding Force/Door	1200 LBS / 544kg
Lock Status Sensor	Standard
LED	Standard
Timer	Standard
Door Status	Standard
Listings	cUL, UL
Warranty	1 year

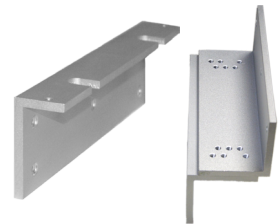
PART NUMBERS



CA-TA5111-5TD
(Standard Single Door Maglock)



CA-TA5121-5TD
(Standard Double Door Maglock)



CA-TA-B1002
(Optional L & Z Bracket)