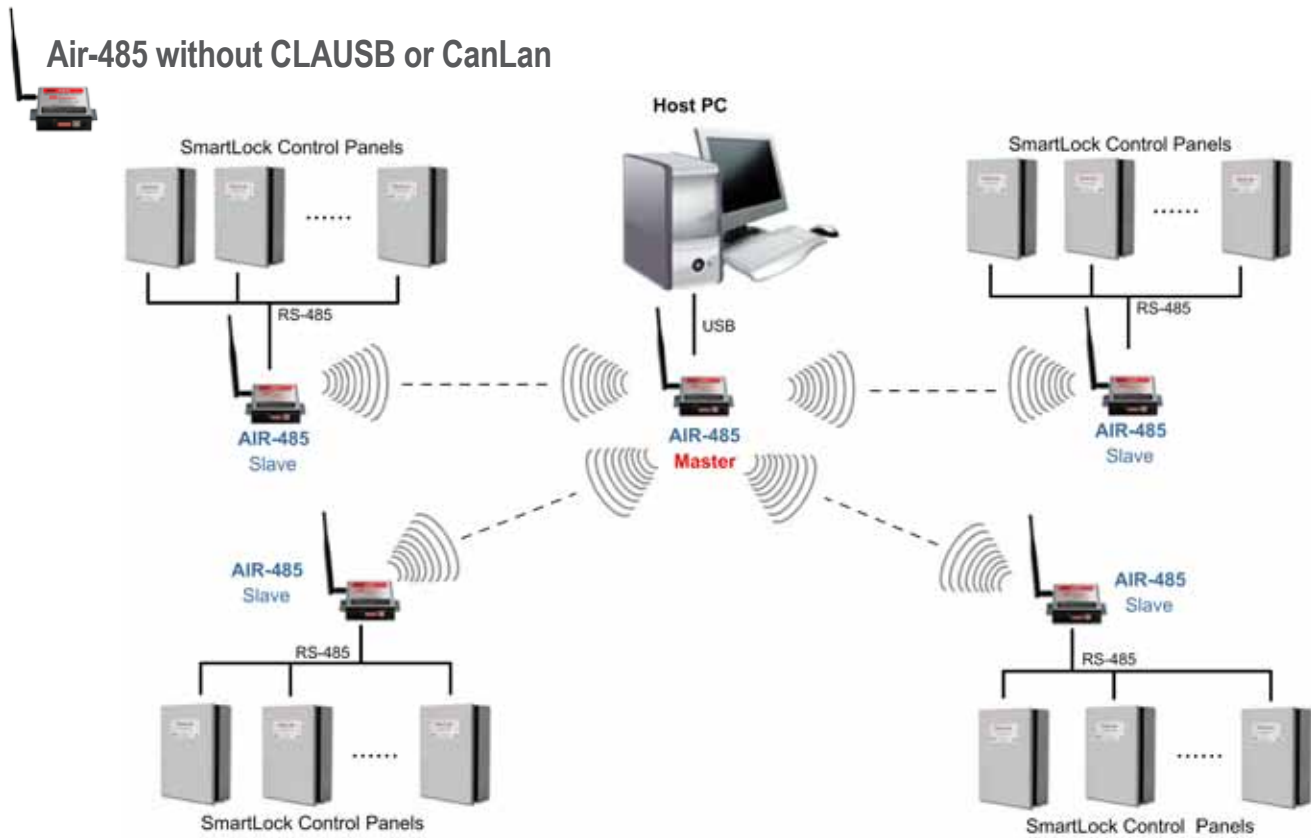
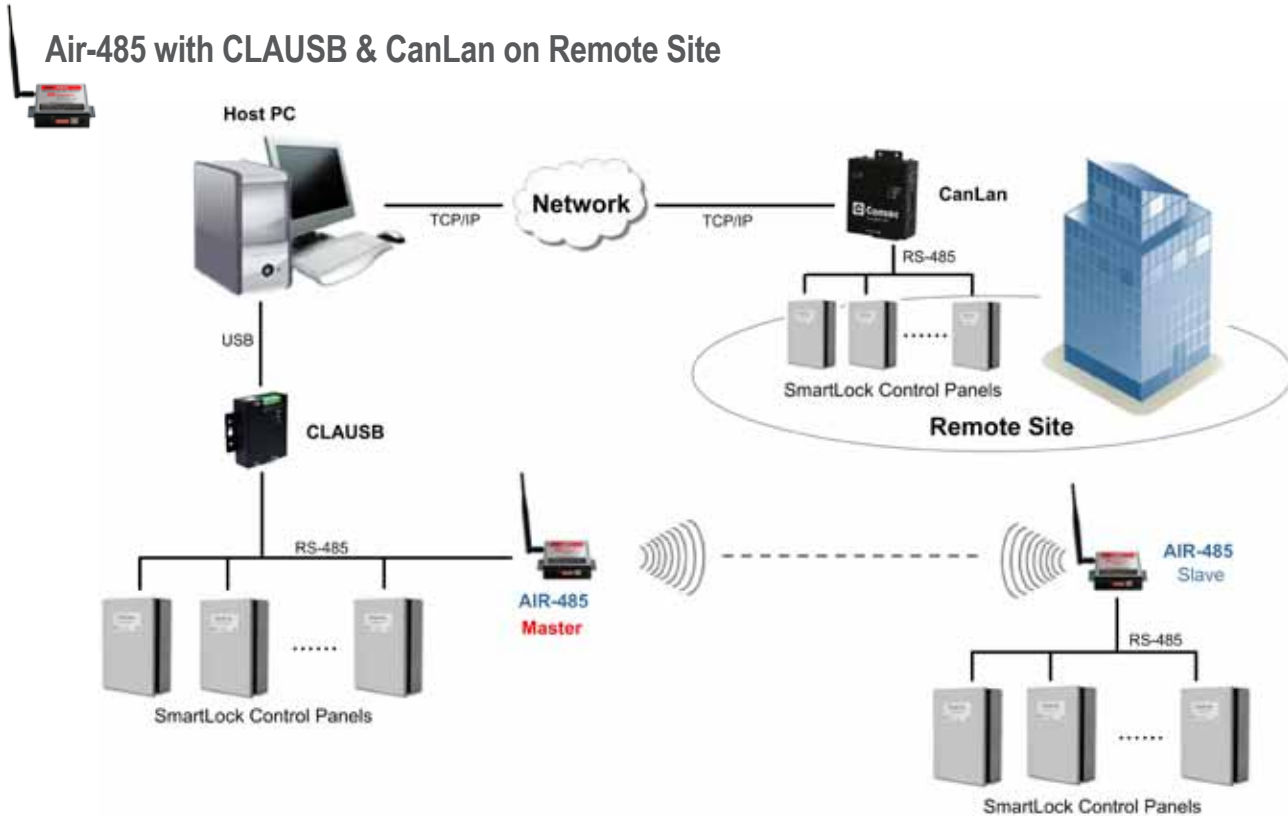


Typical Air-485™ Configuration for SmartLock

Air-485 without CLAUSB or CanLan

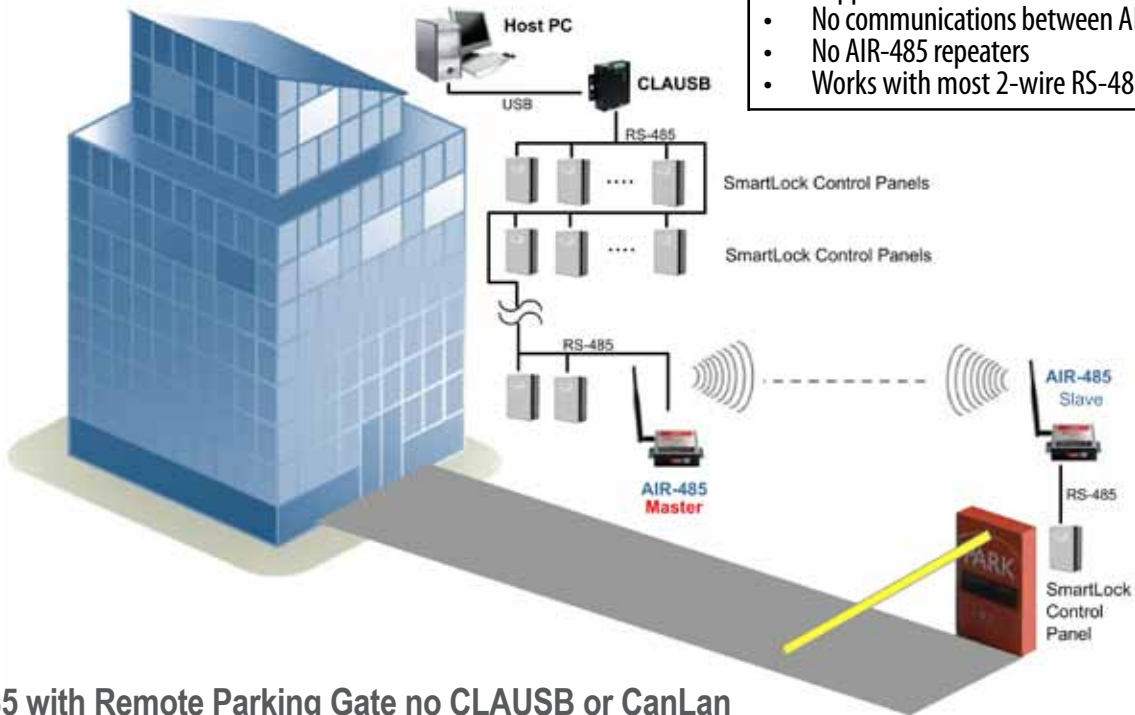


Air-485 with CLAUSB & CanLan on Remote Site



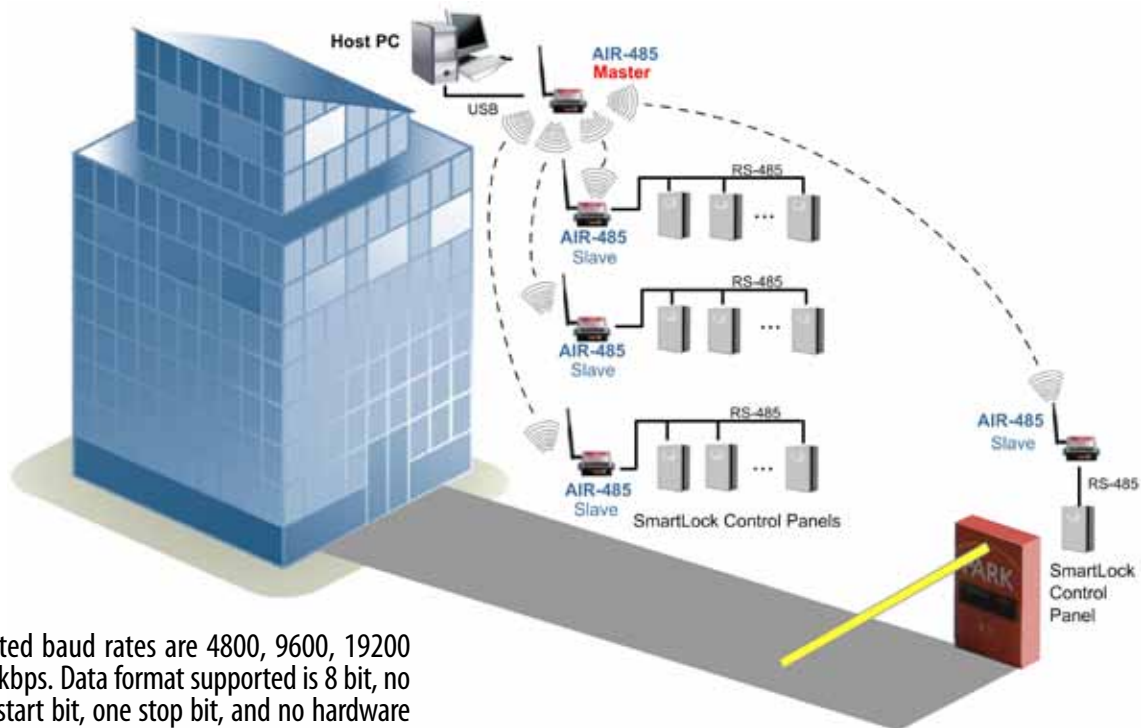
Typical Air-485™ Configuration for SmartLock

Air-485 with Remote Parking Gate using CLAUSB



- IMPORTANT**
- Each panel must have a unique address
 - Supports maximum 30 panels
 - Supports maximum 16 AIR-485 slaves
 - No communications between AIR-485 slaves
 - No AIR-485 repeaters
 - Works with most 2-wire RS-485 products*

Air-485 with Remote Parking Gate no CLAUSB or CanLan



***NOTE:**

The supported baud rates are 4800, 9600, 19200 and 38400 kbps. Data format supported is 8 bit, no parity, one start bit, one stop bit, and no hardware flow controls. A site test must be done in all instances to confirm performance. **There are no short cuts!**